



**Relentless Innovation  
Uncompromising Quality  
Comprehensive Service**



# **DOMBOR VALVE BROCHURE**

Generating high-quality valve solutions requires a deep insight into market needs. DomBor Valve, as a reliable valve manufacturer, relies on a trusted supply network, the latest production, and assembly machinery, along with digital design capabilities and 20 years of industry experience.

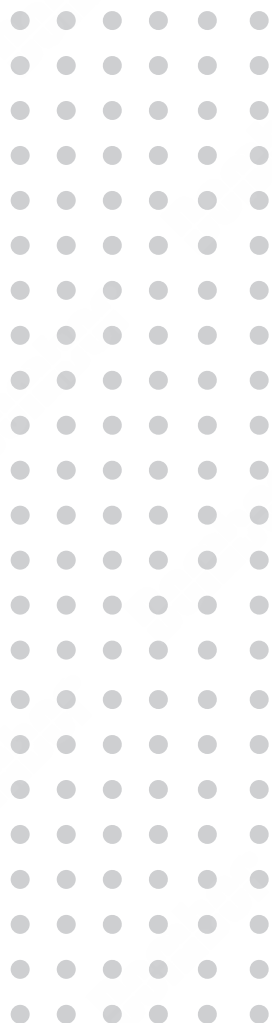
**Dombor**



**“Together with our partners, we aim for cleaner production displaying our strong commitment to sustainable business, mindful of the future.”**

-Sea Zhang  
CEO of DomBor Valve





# Catalog

<b>01 About Dombor</b>	_____	<b>1</b>
<b>02 Our Partners</b>	_____	<b>5</b>
<b>03 Manufacturing</b>	_____	<b>9</b>
<b>04 Quality Control</b>	_____	<b>11</b>
<b>05 Product Categories</b>	_____	<b>19</b>



# Part One

# About Dombor

## Premier Manufacturer of High-quality Custom Valves

Founded in 2001, DomBor prides itself on being a premier manufacturer of high-quality custom valves. Working with modern technology and advanced production equipment, we specialize in manufacturing a diverse array of industrial valves capable of handling severe working conditions and perfect for industrial applications.

Constantly pushing the bar in custom valve manufacturing, our expert engineers seek answers to upcoming concerns in the industry. Diligence in research and development allows us to address those concerns and deliver exceptional wholesale valves for refineries, treatment plants, mining facilities, and others.



# DomBor Valve

## Grow Through Innovative Changes.

DomBor Valve continues to excel in trend-setting R&D and sustainability practices to reduce costs and ensure optimal performance for every valve product.

Meanwhile, cutting-edge developments in our product design and manufacturing process have allowed us to earn numerous intellectual property rights and quality certifications.



### Professional Service

Providing constant feedback over our production cycle, our team also handles on-site technical training and support for timely transactions.



### Production Strength

With a factory employing 5 production lines and numerous machines, we easily produce up to 8,000 tons of valves annually.



### Strict Quality Control

Together with third-party inspection teams, we use advanced testing equipment in our certified laboratory to test every valve before delivery.



### R&D Capabilities

With over 15 years of experience, our team continues to manufacture the latest valve solutions based on market trends and industry challenges



### 20 Years of Experience

Since 2001, we have been running an efficient production system acquiring patents and continually innovating our valves for efficient global resource deliveries.

# DomBor History

“We never strayed from the promise we made years ago to create optimized, affordable, and tailor-made products. We create valves, not for the sake of profit, but the betterment of every business around the world.”

## 2001 - 2009

Gavin and Sea established DomBor, an industrial valve brand for a wide business range in 2001. In the following years, we passed the ISO9001 quality management system certification by making our production capabilities compliant with global standards as well as passing TS-related certification.

## 2010 - 2016

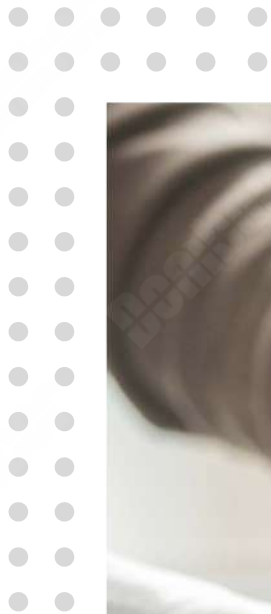
The creation of our full series of hard-sealed butterfly valves was successfully developed during 2010-2011. In 2015, we produced our first ultra-high-pressure 1500# valve and the DN2600 (104 inches) large-diameter all-metal flange hard sealed butterfly valve.

## 2017 - 2019

In 2017, all of our decision-makers decided to relocate part of the factory's equipment to Wenzhou. The non-regional industry company DomBor was established in Wenzhou in 2018. This factory has 20,000 square meters of workspace, high-end processing equipment & testing equipment, and an established valve test center. Till 2019, the company achieved an annual output of 5,000 tons of valves, providing us with good economic benefits.

## 2020 - Now

In 2020, DomBor obtained a series of national and international authoritative certifications such as the TS license for special equipment manufacturing, CE, API, and SIL3. Since 2020, we have actively responded to the global epidemic, ensuring production and providing high-quality products. DomBor is always on the way to become a better industry leader.



**Dombor**



# Part Two

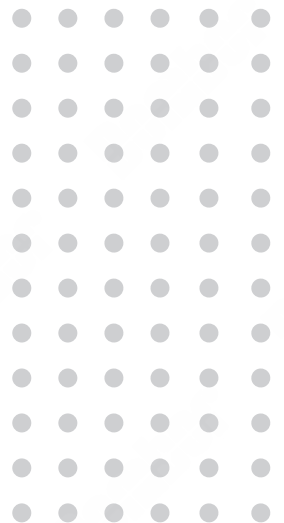
## Our Partners

### Win-Win Partnership

With a wide range of industrial valves, DomBor can cooperate with any kind of client.

When you are constructing or forming a valve system, you need a specific solution for your project requirements. DomBor can assist you with our full-service support as well as system maintenance programs for all of your orders.

To provide the right valve solutions for all your customers, you need a diverse range of industrial valves that fits their needs. Working with DomBor gives you a rich selection of pump valves for any of your clients.





## Benefits from Cooperation

### Design Confirmation

Expert designers create practical valve designs based on the data acquired during the consultation, along with any special requirements you may have. The completed design is forwarded to you, ensuring that the design specifications capture your unique branding or marketing concepts.

After getting your approval, the design is then forwarded to our production team for sample making.

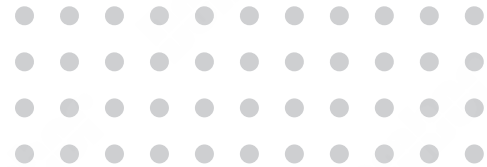
### 30-Day Lead Time

Customized valve orders take a maximum of 30 days for completion, including the prototyping phase.

For standard orders, OEM requests, or urgent purchases, our warehouse is packed with stock standard parts, allowing our team to complete your orders within 7 days from the date of your request.



**rotork**®



### **Value-Added Delivery**

As we value your business with us, we add free accessories to your purchase at the time of shipment, amounting to 10% of the total order amount.

Per request, we can also include additional documents to the shipment, like product parameters, test results, and other important information.

### **Responsive After-Sales Service**

All valves from DomBor come with a 24-month warranty period that covers technical assistance, on-site repairs, and free product replacements.

Professional aftersales team handles your concerns via email and video calls, while our on-site technical support staff are certified experts in the field and provide fast, effective solutions for any kind of issues.



**Domber**

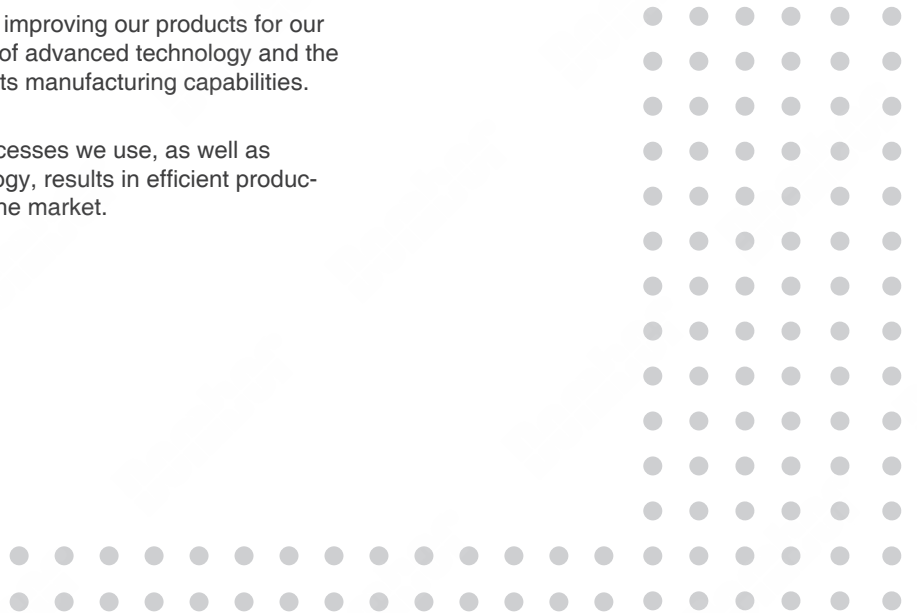
# Part Three

## Manufacturing

### Growing Attentive Research and Development Culture

Seeking new and innovative means of improving our products for our clients, DomBor harnesses the power of advanced technology and the latest production equipment to propel its manufacturing capabilities.

Heavy investment in the tools and processes we use, as well as training our team to utilize the technology, results in efficient production and optimized custom valves for the market.



## DomBor Valve

# DomBor Capabilities at a Glance

A major pillar in our continued success as a global valve manufacturer is our fully-functional production facility, packed with state-of-the-art processing equipment and talented staff.

**5**

Production Lines

**20000 m<sup>2</sup>**

Manufacturing Area

**8000tons**

Annual Output

**\$3200w+**

Annual Production Value

## Machinery for Highly Efficient Valve Production



52 Sets of CNC Machines



2.5-meter Vertical Lathe

# How We Handle Details Makes Us Different

The performance, durability, and service life of DBV industrial valves come from how we process and prepare each of our raw materials: properly, with great attention to detail.

- Rough Machining
- Heat Treating
- Surface Finishing
- Fine Machining
- Boring
- Drilling

## We Embrace Tech

DomBor understands that constant innovation is an essential component of satisfying our client's needs and, boosting our growth and success.

Adopting a culture of innovation and development throughout the company, implementing effective management protocols, employing modern production systems, and adhering to quality guidelines—all this enables each of our departments, and our company as a whole, to flourish.



8 Sets of 1.6-meter Vertical Lathes





**Dombor**



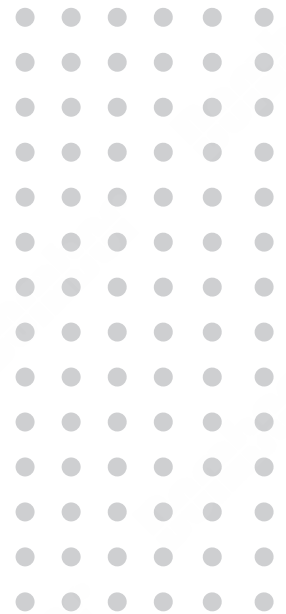
# Part Four

## Quality Control

### We Take Pride in Our High-Quality Work

Understanding how important product quality is to the success of a brand, DomBor places a premium on maintaining high-quality standards in both our valves and our services.

Devoting human and financial resources, along with our commitment to quality, we always perform at our best to manufacture reliable valves that surpass global certification requirements.



## DomBor Valve

# Making Things Better



### Experienced Quality Inspection Team

With over 10 years of experience in the industry, our expert team of quality inspectors has the right skill set to ensure our valves pass global standards.



### Professional Laboratory

Product and material testing is handled in-house via our testing laboratory, equipped with the latest testing equipment comparable to third-party professional facilities.



### International Certificates

Conducting various tests and witness auditing, we have obtained most completely certificate: API 6D, API609,API607,API6FA,SIL3,CE,ISO9001, ISO18001,TS,CU-TR 010/032,ISO 15848-1(fugitive emission certificate).

## Branded and Reliable Raw Materials

### Carbon Steel

WCB, LCB, WCC, LC1, A105, LF2

### Stainless Steel

CF8, CF8M, CF3, CF3M, 310S, 904L, F304, F316, F304L, F316L, CF8C, F347

### Cr-mo Alloy

WC6, WC9, C5, C12A, F11, F22, F5, F91

### Duplex Stainless Steel

4A, 5A, 6A, F51, F53, F55, CK3MCUN, CD4MCU, CK20

### Copper Alloy

C95800, C95500, C83600

### Monel Alloy

MONEL 400, MONEL 500, M35-1

### Inconel Alloy

INCONEL600, INCONEL 625, INCONEL 800

### Ti Alloy

TITANIUM GR2, GR3, GR5, GR12

### Hast Alloy

HAST ALLOY C276

# Certified



## Key Part of Quality Management and Assurance





**Dombor**

# Part Five

## Product Categories

### Well-Engineered Industrial Valves

To address the strict requirements of the market on industrial valves, each DomBor valve is made through our strict QA system.

For specific industry and medium requirements, we create unique valves with a specific appearance, material, and processing technology.

DomBor Valve offers a one-stop-shop for all your valve needs with our extensive selection of butterfly valves, ball valves, gate valves, check valves, and much more. The valve solutions we provide can accomplish your business goals with minimum effort, time, and costs.



## DomBor Valve

# Butterfly Valves DB1 series

Lightweight and compact, our butterfly valves can be integrated with large-diameter pipes that handle liquid and gas mediums. The butterfly valves we have include high-performance butterfly valves, triple-offset butterfly valves, and flange butterfly valves.



**Concentric  
Butterfly Valves**  
**DB1.1**



**Triple-Offset  
Butterfly Valves**  
**DB1.2**



**High-Performance  
Butterfly Valves**  
**DB1.3**



**Wafer Butterfly Valves**  
**DB1W**



**Lug Butterfly Valves**  
**DB1LW**



**Flange Butterfly Valves**  
**DB1F**

## DomBor Valve

# Ball Valves **DQ2 series**



You can find floating ball valves, way ball valves, port ball valves, and many more in our product offering. Each of our ball valves has a compact and lightweight design, making them compatible with various piping systems.



**Floating Ball Valves**  
**DQ2.1**



**Trunnion Ball Valves**  
**DQ2.2**



**3-Way Ball Valves**  
**DQ2.3**



**Top-Entry Ball Valves**  
**DQ2.4**



**V-Port Ball Valves**  
**DQ2.5**



**fully welded ball valve**  
**DQ2.6**

## DomBor Valve

# Gate Valves **DG3 series**



The range of DomBor gate valves we provide includes wedge gate valves, slab gate valves, and knife gate valves. Gate valves we produce are constructed to allow the medium's flow to pass through without obstruction as well as to restrict it entirely.



**Wedge Gate Valves**  
**DG3.1**



**Slab Gate Valves**  
**DG3.2**



**Knife Gate Valves**  
**DG3.3**



**Resilient Seated Gate Valves**  
**DG3.4**



**Stainless Steel Gate Valves**  
**DG3.5**





## DomBor Valve

# Globe Valves DJ4 series



Complete any project with our full range of globe valves, including straight pattern globe valves and angle globe valves. Globe valves we provide have versatile usage and have optimum full-closing quality.



**Straight-Pattern  
Globe Valves**

**DJ4.1**



**Angle  
Globe Valves**

**DJ4.2**



**Y-Pattern  
Globe Valves**

**DJ4.3**



**Bellows-Sealed  
Globe Valves**

**DJ4.4**

## DomBor Valve

# Check Valves DC5 series



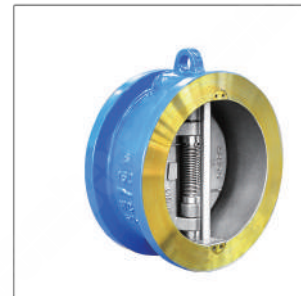
Select from our complete range of check valves for any business requirements including our swing check valves and lift check valves. Each of our check valves is designed to maintain intense pressure and prevent backflow.



**Swing Check Valves**  
**DC5.1**



**Lift Check Valves**  
**DC5.2**



**Dual-Plate Check Valves**  
**DC5.3**



**Non-Slam Check Valves**  
**DC5.4**



**Tilting-Disc Check Valves**  
**DC5.5**



## DomBor Valve

# Plug Valves DP6 series



From eccentric plug valves to sleeved plug valves, DomBor offers a wide range of plug valves for any piping system. Each of these plug valves achieves a tight seal and immediate on/off operation.



**Eccentric Plug Valves**

**DP6.1**



**Lubricated Plug Valves**

**DP6.2**



**Sleeved Plug Valves**

**DP6.3**



**Double Block and Bleed Plug Valves**

**DP6.4**

## DomBor Valve

# Actuated Valves DA7 series



DomBor Valve produces pneumatic actuated valves, electric actuated valves, and hydraulic actuated valves for different piping systems. Each actuated valve can be adjusted for different piping conditions and is easy to maintain.



**Pneumatic  
Actuated Valves**  
**DA7.1**



**Electric  
Actuated Valves**  
**DA7.2**



**Hydraulic  
Actuated Valves**  
**DA7.3**



## DomBor Valve

# More Valves **DM8 series**



The one-stop-shop selection of industrial valves we offer includes needle valves, cryogenic valves, lined valves, and many more. Every valve is made to handle intense pressure and allow for easy flow maintenance thanks to its construction.



**Needle Valves**

**DM8.1**



**Cryogenic Valves**

**DM8.2**



**Forged Valves**

**DM8.3**



**Pressure Seal Valves**

**DM8.4**



**Lined Valves**

**DM8.5**



**Steam Traps**

**DM8.6**



**Dombor**

**Innovation. Ingenuity. Infinity.**

**Inquiries**

+86-0577-67387722  
dombor@dombor.com

**Head Office**

No.96 Fanhua East Road,Oubei Wenzhou,Zhejiang China